



## Hepatoprotective activity of *Bauhinia X Blackeana* Linn leaf extracts

B Radhika\*, M Suma

Department of Pharmaceutical Sciences, Vaageswari College of Pharmacy, Thimmapur, Karimnagar, Telangana, India

### Abstract

The present investigation was aimed at investigating the Hepatoprotective activity of *Bauhinia X Blackeana* (Hong Kong orchid tree) (Caesalpiniaceae (Fabales)) leaves. The dried leaf powder was subjected to successive Soxhlet extraction using petroleum ether, chloroform, ethyl acetate, methanol and water extracts were investigated for Hepatoprotective activity in Wistar rats using standard methods. In the present study, the animals were pretreated with test extracts before inducing liver damage with CCl<sub>4</sub>. Seven days after acclimatization the rats were divided into seven groups (I-IX), each group consisting of six animals. All animals were kept on same diet for 7 days. The results showed that the Methanolic extract was found to be more potent as hepatoprotective than the remaining extracts of the *Bauhinia X blackeana* leaves.

**Keywords:** *Bauhinia X blackeana*, soxhlet extraction, arachis oil, acute toxicity

### Introduction

Liver is the principal and most core intricate organ of the body. It plays a major role in detoxification and excretion of many endogenous and exogenous compounds. Any impairment or injury of the liver may result in many consequences on one's health. The frequent target for various toxicants is liver which is actively involved in many metabolic tasks [1]. Hepatic damage is linked with falsification of these metabolic activities [2]. In experimental studies, Carbon tetra chloride is used widely to induce liver damage and toxicity of it has been extensively studied. Hepatic injury may result in leakage of cellular enzymes into the blood stream and centrilobular necrosis [3, 5]. The extent of functional damage of liver can be analyzed by Liver function tests (LFTs). The progress or regress of the disease can be studied by repetitive LFTs. LFTs are helpful in identifying the cause of hepatic disorders [6].

Plants have key role in our daily life and on our health. *Bauhinia* plants of family Caesalpiniaceae (Fabales) contains about 15 species that obtain in India. They are in different forms as bushes, trees and climbers. *Bauhinia X blackeana* (Hong Kong orchid tree) this tree grows up to 20 feet tall with light brown bark and the tree looks like umbrella. It has rich rose-purple fragrant blooms with pink stamens; as it is the hybrid plant it does not have the seeds and it is sterile. It is grown in all climatic and in all types of soils and the flowers bloom in the winter season and the tree is full of pink color flowers, there are few more species in this *Bauhinia* like *Bauhinia tomentosa* which are yellow color flowers and another variety *Bauhinia acuminata* which are white colour flowers which are Frequently observed on the road side [7].

### Materials and methods

#### Collection of plant material

For the present investigation, *Bauhinia X blackeana* leaves were collected from Vaageswari College, Karimnagar district. The leaves were separated, shade dried and powdered with mixer and sieved. The Pharmacognostic studies were conducted with fresh leaves and leaf powder. The plant was identified and authenticated Specimen

Accession No: by BSI/DRC/2017-2018/TECH/779. The leaves were dried in shade and stored at room temperature.

### Materials

Silymarin was obtained from Micro Labs, Bangalore. SGOT and SGPT kits were obtained from Crest biosystems, Goa. Kits for determination of alkaline phosphatase, albumin and total protein were obtained from M/s Excel Diagnostics Pvt. Ltd, Hyderabad. Bilirubin was obtained from Anamol Laboratories Pvt. Ltd, Palghar, Maharashtra. All the solvents were procured from E. Merck, Mumbai.

### Procurement and maintenance of animals

Adult albino rats of either sex belonging to wistar strain weighing 150 – 200g were purchased from Mahaveera Enterprises, Hyderabad. The animals were acclimatized for about 7 days prior to dosing. Cage numbers and individual markings were made with a marker pen to identify the animals. The animals were maintained in well ventilated room temperature with natural 12 ± 1h day–night cycle in the propylene cages with a bedding of paddy. Pellet chow feed standard diet under good management conditions and water ad libitum was provided to the animals. The study was carried out in accordance to the guidelines prescribed by Committee for the Purpose of Control and Supervision of Experiments on Animals (CPCSEA).

### Preparation of extracts

For the present investigation, the extracts of leaf powder of *Bauhinia X blackeana* were prepared by successive soxhlet extraction with petroleum ether (60 – 80 °C), chloroform, ethyl acetate, methanol and water for 8 hours. Filtrate was concentrated and dried in desiccator. Weighed amount of dried extract was dissolved arachis oil [9] and subjected to hepatoprotective activity [10]

### Pharmacological screening

For the present investigation, the animals were pretreated with test extracts before inducing liver damage with CCl<sub>4</sub>. Seven days after acclimatization the rats were divided into nine groups (I- IX), each group consisting of six animals.

All animals were kept on same diet for 7 days. Group I served as normal and received 1 ml/kg of arachis oil p.o. for seven days. Group II served as toxic control and was given 5 ml/kg of 50% v/v CCl<sub>4</sub> in olive oil intraperitoneally on the seventh day. Group III (standard) animals were administered with 100 mg/kg of silymarin p.o. for seven days, followed by CCl<sub>4</sub> administration i.p. on the seventh day. Group IV –IX were treated in a similar way to that of group III (standard) using petroleum ether, methanolic and aqueous extracts of *Bauhinia X blackeana* leaves at doses of 250 and 500 mg/kg in place of standard respectively. All the rats were anaesthetized with thiopentone sodium (60 mg/kg i.p.) 36h after administration of CCl<sub>4</sub>. Blood was collected from common carotid artery by carefully opening the neck region of the rat. After collection, the blood samples were allowed to coagulate at room temperature for at least one hour. Serum was separated by centrifugation at 3000 rpm for 30 minutes and then analysed for total bilirubin (TBL) <sup>[11]</sup>, alanine transaminase (ALT), aspartate transaminase (AST) <sup>[12]</sup>, alkaline phosphatase (ALP), total protein (TPL) and albumin levels (ALB) <sup>[13]</sup>. Any toxicity to the liver can result in increase in ALT, AST and ALP and a decrease in TBL, TPL and ALB levels. The animals were dissected, the livers were carefully taken out and washed with normal saline solution and preserved in formalin solution (10% formaldehyde) for histopathological studies.

#### Histopathological examination of liver

The livers were excised from the experimental animals of each group after collecting the blood sample and washed with normal saline. Weight of liver of each animal was noted. After this, the livers were fixed in 10% buffered neutral formalin and with bovine solution they were processed for paraffin embedding following the standard microtechnique. The sections were processed in alcohol xylene series and were stained with alum haematoxylin and eosin. The sections were examined by a light microscope (Model No: 138, Linco Pvt Ltd, Ambala-cantt, Punjab, India) with 100X magnification for the evaluation of histopathological changes <sup>[14]</sup>.

#### Statistical analysis

The data are presented as mean±SD and analyzed by one-way ANOVA, followed by Dunnett 't' test. The results of all the extracts including the standard drug are compared with the result produced by control and it is considered as significant as P < 0.05.

#### Results

From the investigations (Table 1) it can be observed that the levels of ALT, AST, ALP, and TBL reduced upon administration of the petroleum ether, methanol and aqueous extracts. TPL and ALB levels were found to increase with all the extracts. Among all the extracts, aqueous extract (500mg/kg) showed significant activity which was comparable to that of standard drug silymarin (100mg/kg). The hepatoprotective activity of all the extracts was dose dependent with respect to ALT, AST, TBL and TPL assays. Histopathological examination of liver sections

of control group showed normal cellular arrangement with distinct hepatic cells, sinusoidal spaces, and central vein. The liver sections of the group intoxicated with Carbon tetrachloride, vacuolization and irregular distribution of normal hepatic cells with necrosis was observed. The liver sections of the group treated with aqueous extract (500mg/kg) body weight p.o, followed by intoxication with carbon tetrachloride, showed less vacuole formation and absence of necrosis and less visible changes (Fig 7). This was comparable with standard Silymarin, projecting the hepatoprotective effect of the test drug. The activity of aqueous extract (500mg/kg) showed significant activity when compared with that of other extracts.

#### Discussion

The present studies were performed to assess the hepatoprotective activity of various extracts of *Bauhinia X blackeana* in rats, against hepatotoxicant, Carbon tetrachloride which is biotransformed to trichloromethyl free radical, by the cytochrome P-450 system. This free radical binds covalently to cell membranes and organelles and causes lipid peroxidation, disturb Ca<sup>2+</sup> haemostasis leading to cell death. In liver toxicity, changes in endoplasmic reticulum occur, metabolic enzyme activation is lost, protein synthesis is reduced and activation of glucose-6-phosphatase is lost, leading to liver damage. In our study, animals of Group II (toxic control) receiving Carbon tetrachloride significantly lost their body weight and showed reduced food consumption as compared to control group. Animals of Group III receiving Carbon tetrachloride plus standard drug Silymarin 100mg/kg body weight and Group IV - IX receiving Carbon tetrachloride plus 250 and 500mg/kg body weight of test extracts, showed a significant increase in body weight and food consumption when compared to Carbon tetrachloride treated group animals. These findings indicated that the toxic effects of Carbon tetrachloride were significantly neutralized by the extracts administered which were comparable to standard drug. Any toxicity to the liver can result in increase in ALT, AST, ALP and TBL and a decrease in TPL and ALB levels. Hence, the estimation of these biochemical parameters in the serum may be a useful to determine the extent of hepatocellular damage. The restoration of these enzyme levels to normal after administration of the extracts manifests clearly the antihepatotoxic effects of the extract. In the histopathological examination of liver sections in group IV - IX (test group) the normal architecture of the liver was retained when compared to group II (toxic control) and was almost comparable to that of group III (standard) and among all the extracts, hepatoprotective activity of aqueous extract 500 mg/kg body weight was comparable with the standard Silymarin group, thus, confirming the significant hepatoprotective effect of this extract.

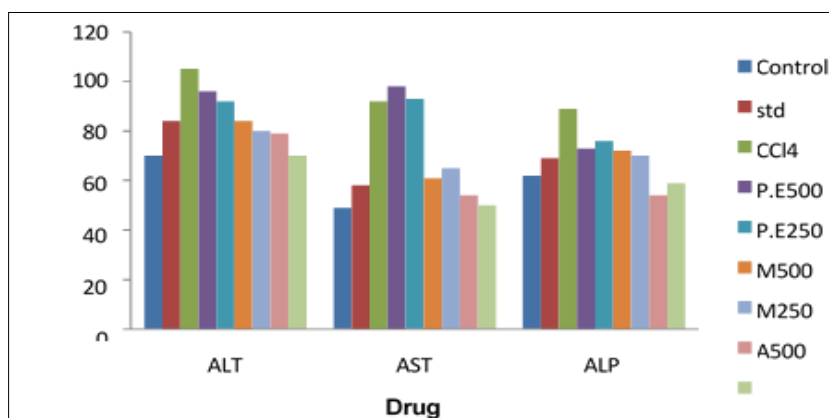
#### Conclusion

In accordance with these results, it may be confirmed that aqueous extract 500 mg/kg body weight has significant hepatoprotective activity. For further progress of this study, specific active constituents from leaves of *Bauhinia X blackeana* responsible for hepatoprotective effect can be identified

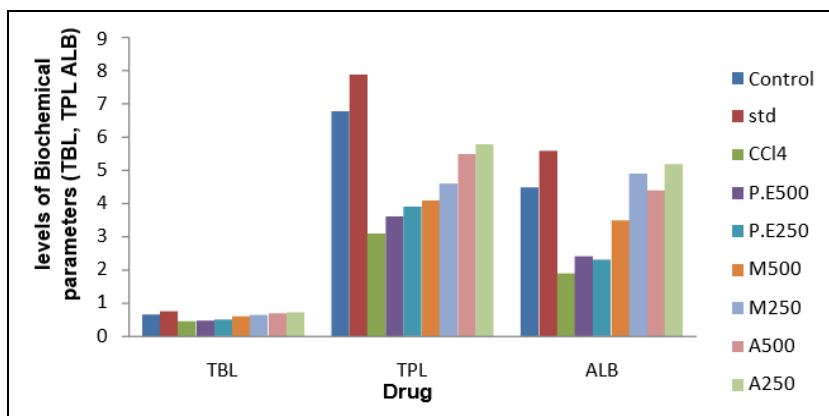
**Table 1:** Effect of Extracts on Different Serum Biochemical Parameters in CCl4 Induced Liver Toxicity

Groups	Dose (mg/kg)	ALT (U/ml)	AST (U/ml)	ALP (KA units/ml)	TBL (mg/dl)	TPL (mg/dl)	ALB (gm/dl)
Control	-	70±2.98	49±2.21	62±3.65	0.65±0.04	6.8±0.36	4.5±0.4
Standard	100	84±2.98	58±1.82	69±1.5	0.55±0.02	7.9±0.40	5.6±0.29
CCl4	-	105±3.30	92±3.65	89±2.58	0.75±0.05	3.1±0.18	1.9±0.25
Pet ether	250	96±3.41	98±2.94	73±2.94	0.47±0.04	3.6±0.18	2.4±0.18
	500	92±1.91	93±3.65	76±3.65	0.50±0.04	3.9±0.25	2.3±0.29
Methanol	250	84±3.65	61±3.36	72±2.58	0.60±0.04	4.1±0.18	3.5±0.25
	500	80±2.38	65±3.91	70±2.94	0.64±0.02	4.6±0.18	4.9±0.22
Aqueous	250	79±2.58	54±3.30	54±3.40	0.69±0.01	5.5±0.22	4.4±0.18
	500	70±3.65	50±2.75	59±3.5	0.72±0.01	5.8±0.40	5.2±0.18

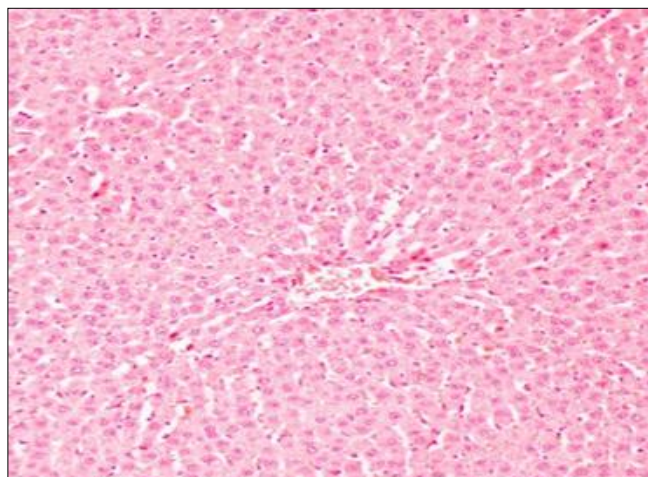
Values expressed as mean ± SD, P value < 0.05



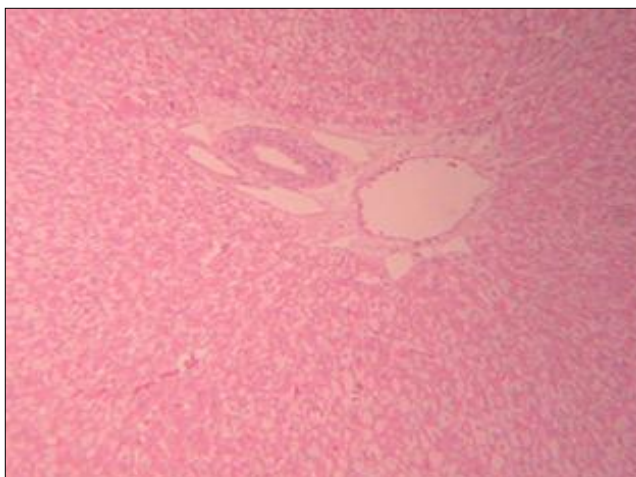
**Graph 1:** Effect of leaf extracts of *Triadica sebifera* on levels of various biochemical parameters (ALT, AST, and ALP) in CCl4 induced liver toxicity



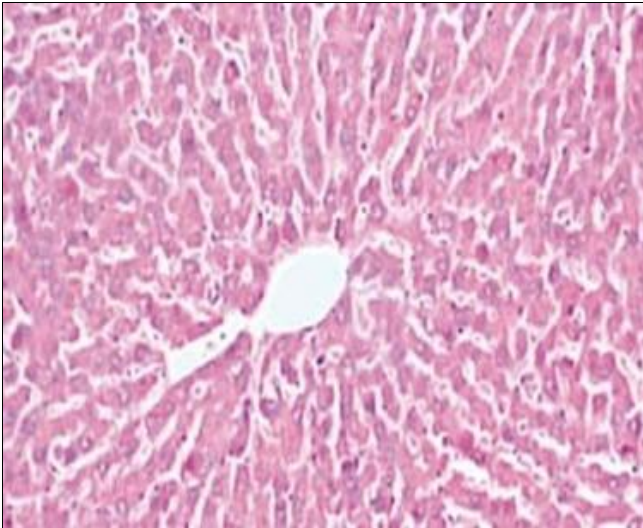
**Graph 2:** Effect of leaf extracts of *Triadica sebifera* on levels of various biochemical parameters (TBL, TPL, ALB) in CCl4 induced liver toxicity



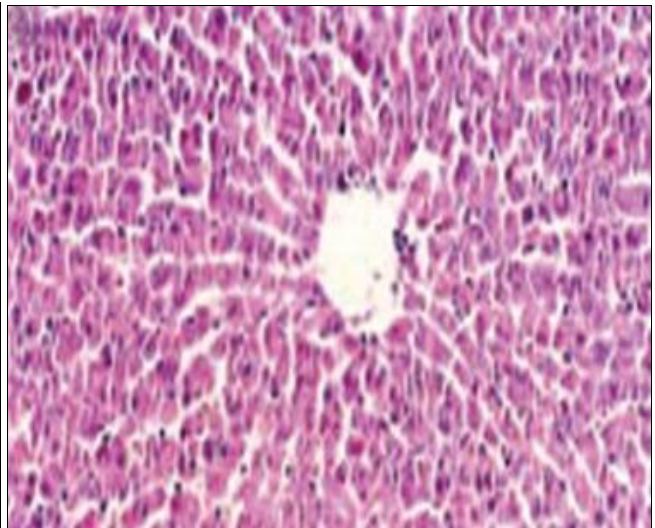
**Fig 1:** Liver of rat treated with Control



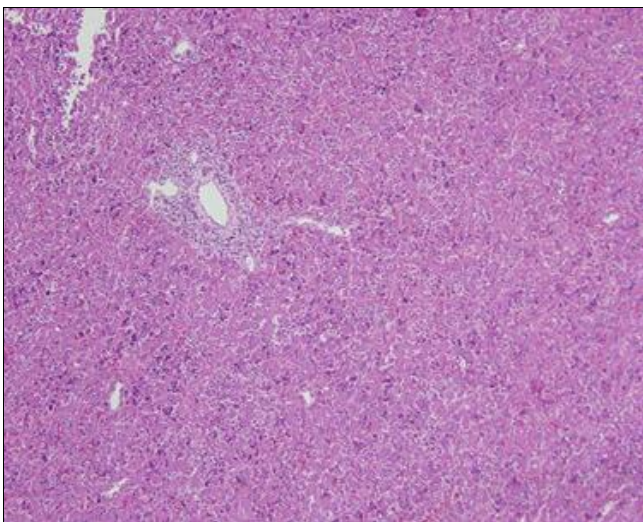
**Fig 2:** Liver of rat treated with petroleum ether extract 250 mg/kg



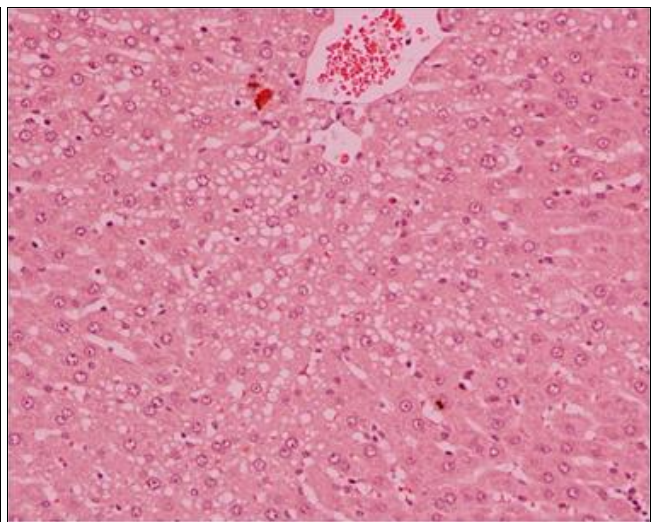
**Fig 3:** Liver of rat treated with petroleum ether extract 500 mg/kg



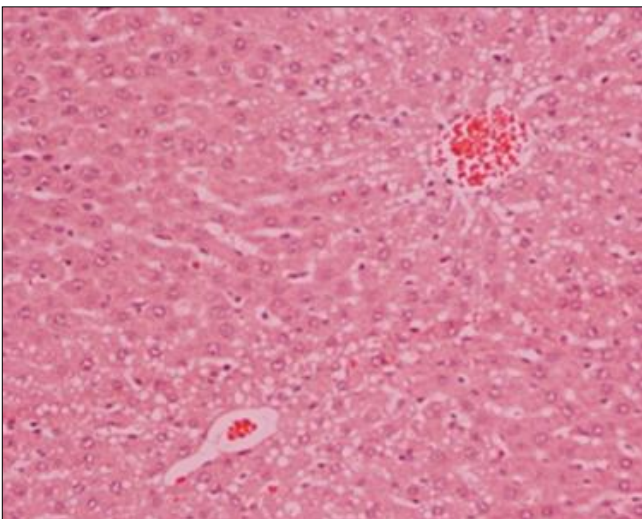
**Fig 4:** Liver of rat treated with methanol extract 250 mg/kg



**Fig 5:** Liver of rat treated with methanol extract 500 mg/kg



**Fig 6:** Liver of rat treated with aqueous extract 250 mg/kg



**Fig 7:** Liver of rat treated with aqueous extract 500 mg/kg

**References**

1. Meyer SA, Kulkarni AP. Hepatotoxicity. In: Introduction to Biochemical toxicology. 3rd ed. New York: John Wiley Sons, 2001, 487.
2. Wolf PL. Biochemical diagnosis of liver disease. Ind. J. Clin. Biochem,1999;(14):59-64.

3. Hewawasam RP, Jayatilaka KAPW, Pathirana C, Mudduwa LKB. Hepatoprotective effect of *Epaltes divaricata* extract on carbon tetrachloride induced hepatotoxicity in mice. Indian J Med Res. July,2004;(120):30 – 34.
4. Muriel P, Alba N, Perez – Alvarez VM, Shibayama M, Tsutsumi VK. Kupffer cells inhibition prevents hepatic lipid peroxidation and damage induced by carbon tetrachloride. Comp Biochem Physiol C Toxicol Pharmacol,2001;(130):219 – 26.
5. Recknagel RO, Glende EA Jr, Dolak JA, Waller RL. Mechanisms of carbon tetra chloride toxicity. Pharmacol Ther,1989;(43):139 – 45.
6. Jain A.K, Liver and Gall Bladder. In: Textbook of Physiology. Volume I, 2nd ed. Delhi: Avichal publishing company, 2001, 238.
7. <http://davesgarden.com>
8. Kirtikar KR, Basu BD. Indian Medicinal Plants. 2, 3rd ed. Dehradun, India: International Book Distributors, 1988, 1576-78.
9. Jayakar P, Dube R, Kavimani S, Rama V, Vimala S. Effect of *Casaria Esculenta* on Paracetamol induced hepatotoxicity. Indian Drugs. April,1999;36(4):263 – 64.
10. Turner RA. In: Screening Methods in Pharmacology. New York: Academic Press, 1965, 299.
11. Jendrassik L, Grof P. Colorimetric estimation of bilirubin. Biochemistry,1938;81:297. 12. Reitman S, Frankel S. A colorimetric method for the determination of serum glutamic

- oxaloacetic acid, glutamic pyruvate transaminase. American Journal of Clinical Pathology,1957;(28):56 – 63.
12. Tietz N.W. Fundamentals of clinical chemistry. Philadelphia, PA: W. B. Saunders and company, 1976, 602 - 9.
  13. Vishwakarma B, Gadad PC, Kuppast II. Evaluation of hepatoprotective activity of *Lactuca scariola* Linn. Indian drugs. June,2006;43(6):463 – 66